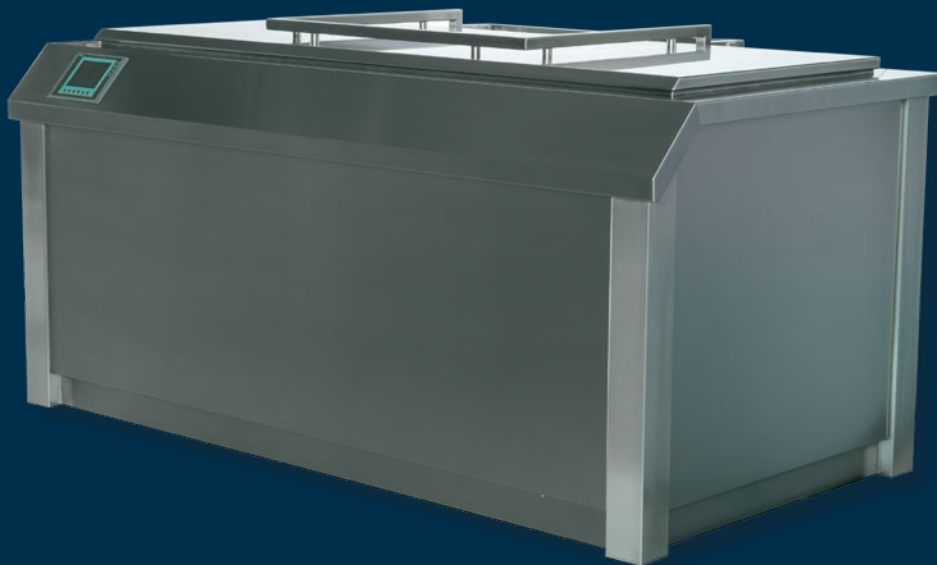


metos
cooking solutions

***Metos Sous-Vide
Custom Made Sous-Vide Solutions***



Food & Kitchen Machinery



Custom Made Sous-Vide Solutions

Sous-vide cooking has many advantages in the commercial kitchen. We specialise in the production of customised sous-vide equipment.

The sous-vide cooking method cooks food under vacuum which contributes to the preservation of the product. We have extensive experience in the production of sous-vide equipment which is produced in brushed stainless steel for easy cleaning. The user-friendly touch-screen display serves all the functions of the machine.

How does it work?

Sous-vide cooking consists of cooking a vacuum-packed product. The food is prepared and vacuum-packed. Then the product is cooked in a water bath until the desired temperature is reached. Meat that requires a crust must be fried or baked either before or after the sous-vide cooking.

Benefits

Even though the sous-vide cooking method was developed in a lab there is nothing artificial about food cooked in a sous-vide. Vacuum prepared products have longer shelf life and the cooking bags retain aroma and overall quality of the food offering a full taste experience. In addition sous-vide cooking ensures maximum tenderness in all meat cuts

With sous-vide the taste is the winner:

- Ensures tender meat
- Retains the aroma and overall quality of the food
- Preserves food longer
- Minimizes shrinkage

Custom Made Sous-Vide Solutions for your specific needs

Double fully automatic sous-vide bath

- 2-in-1 sous-vide bath
- Each bath is an independent unit
- Can be used as a heating bath
- Can be used as a cooling bath
- Data log for each bath for selfmonitoring
- The sous-vide bath can handle recipes
- Possibility to hoist the hot sous-vide treated product directly into the cooling bath to complete the sous-vide process



Benefits in the kitchen

In commercial kitchens the sous-vide is essential in achieving unique operational profits. Thanks to the sous-vide cooking method allowing for bulk production, it is a staff reducing production method. The products' prolonged shelf life provides an opportunity to separate in time the preparation and serving, offering great flexibility in production planning. Thanks to the airtight packaging no contamination will occur when handling the products.

The origin of the sous-vide

Based on results dating back to 1799 American and French engineers in the mid 1960'ies began developing the sous-vide method to extend shelf life of prepared food. In 1974 the French cook Georges Pralus discovered that foie gras would retain its fat and texture when prepared under vacuum. During the 1970'ies the method was refined and important factors like cooking time and temperature were determined.

Sous-vide system features baskets and a crane for minimizing heavy lifting

Sous-vide systems offer many advantages:

- Timesaving
- Flexible
- Minimizes staff requirements
- Easy workflow
- More hygienic



Technical specifications: Sous-vide system – pull-out baskets

ITEM NO	55126	55190	55250	55300	55378	55450	55500
Kg per batch	126 kg	190 kg	250 kg	300 kg	378 kg	450 kg	500 kg
Water content, empty L	576	864	1150	1450	1730	2000	2300
Sous-vide, empty (kg*)	300	450	600	750	900	1050	1200
Sous-vide (total kg**)	1002	1504	2000	2500	3008	3500	4000
Length (mm)	1764	2164	2564	2854	3364	3764	4164
Width (mm)	1304	1304	1304	1304	1304	1304	1304
Height (mm)	1094	1094	1094	1094	1094	1094	1094
Power (kW)	38	44	52	59	73	80	87
Current (amp)	54	63	75	85	105	114	125
Drain (dia) (mm)	100	100	100	100	100	100	100
Cold water	3/4" 2,5 bar	3/4" 2,5 bar	3/4" 3 bar	3/4" 3 bar	5/4" 3 bar	5/4" 3 bar	5/4" 3 bar
Hot water	3/4" 2,5 bar	3/4" 2,5 bar	3/4" 3 bar	5/4" 3 bar	5/4" 3 bar	5/4" 3 bar	5/4" 3 bar
Electrical boiler, 7,5 kW	4	5	6	7	8	9	10
No.of baskets/trolleys	14/1	21/2	28/2	35/3	42/3	49/4	56/4
Dimensions baskets L x W x H	730x330x 80mm	730x330x 80mm	730x330x 80mm	730x330x 80mm	730x330x 80mm	730x330x 80mm	730x330x 80mm

Technical specifications: Chiller

CHILLER	ANL 070	ANL 090	ANL 152	ANL 152	ANL 202	NRB 282	NRB 302
Total power input kW	4,2	5,6	8,9	8,9	11,4	17,2	19,4
Amp	8,4	11,0	17,0	17,0	21,0	31,0	36,0
Cooling capacity kW	13,5	18,2	27,0	27,0	35,2	43,1	48,9

* = sous-vide incl. baskets

**= sous-vide incl. baskets, water and product



Technical specifications: Sous-vide system – stack baskets

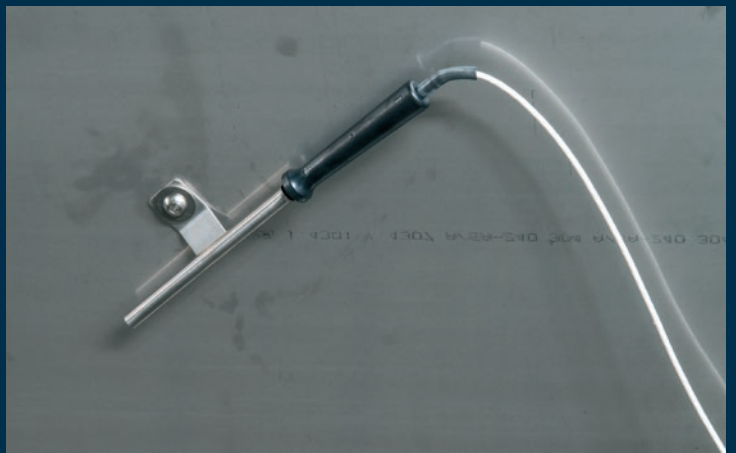
ITEM NO	55126	55190	55250	55300	55378	55450	55500
Kg per batch	126 kg	190 kg	250 kg	300 kg	378 kg	450 kg	500 kg
Water content, empty L	384	576	768	900	1150	1344	1728
Sous-vide, empty (kg*)	300	450	600	750	900	1050	1200
Sous-vide (total kg**)	810	1216	1618	1950	2428	2844	3428
Length (mm)	1764	2164	2564	2854	3364	3764	4164
Width (mm)	1304	1304	1304	1304	1304	1304	1304
Height (mm)	1094	1094	1094	1094	1094	1094	1094
Power (kW)	38	44	52	59	73	80	87
Current (amp)	54	63	75	85	105	114	125
Drain (dia) (mm)	100	100	100	100	100	100	100
Cold water	3/4" 2,5 bar	3/4" 2,5 bar	3/4" 3 bar	3/4" 3 bar	5/4" 3 bar	5/4" 3 bar	5/4" 3 bar
Hot water	3/4" 2,5 bar	3/4" 2,5 bar	3/4" 3 bar	5/4" 3 bar	5/4" 3 bar	5/4" 3 bar	5/4" 3 bar
Electrical boiler, 7,5 kW	4	5	6	7	8	9	10
No.of baskets/trolleys	5/1	7/1	10/2	12/2	14/2	18/3	21/3
Dimensions baskets L x W x H	740x740x 100mm	740x740x 100mm	740x740x 100mm	740x740x 100mm	740x740x 100mm	740x740x 100mm	740x740x 100mm

Technical specifications: Chiller

CHILLER	ANL 070	ANL 090	ANL 152	ANL 152	ANL 202	NRB 282	NRB 302
Total power input kW	4,2	5,6	8,9	8,9	11,4	17,2	19,4
Amp	8,4	11,0	17,0	17,0	21,0	31,0	36,0
Cooling capacity kW	13,5	18,2	27,0	27,0	35,2	43,1	48,9

* = sous-vide incl. baskets

**= sous-vide incl. baskets, water and product





Metos Cooking Solutions

Ahjonkaarre, 04220 Kerava, Finland

tel. +358 204 3913

mcs@metos.com

www.metos.com

