



**More Info**



Data sheet

## acs 1500 d3 - 3x varit- hek®

**The mobile front cooking station with innovative extraction technology.**

The mobile station with integrated “air cleaning system” edge extraction technology on three sides, made entirely of high-quality stainless steel, offers unlimited flexibility and mobility when cooking and makes front cooking an experience – without any unwanted odours.

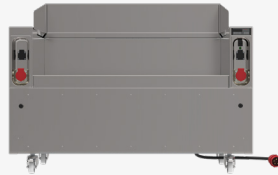
With a digital control and a reliable, multi-layer filter system in the substructure consisting of a grease, activated carbon and pollutant filter, neutralising all odours.

Thanks to the perfectly designed air circulation with edge extraction on 3 sides (d3), a flame-retardant high-performance cyclone filter is used to remove the vapours formed during cooking from the grease, water and odour-laden air right where they originate.

The digital control offers a variety of useful functions, such as a display indicating the degree of wear of the filter elements (activated carbon filter), 4-level extraction power as well as a display of faults by means of continuous text. Different coloured LED lights indicate the operating status, an operating hours counter is also integrated and there is a safe alarm function with a buzzer.

## TECHNICAL SPECIFICATIONS

acs 1500 d3 - 3x varithek®



## TECHNICAL SPECIFICATIONS

Dimensions	1500 x 760 x 1100 mm
Material	stainless steel 1.4301 (CNS)
Weight	130 kg
Connected load	22.000 W
Rated voltage	3N AC 400 V 50/60 Hz
Plug type	CEE-Plug 400V/32A
Cable length	2.000 mm
Protection class	IPX4
Castor	4 swivel castors with brakes
Wheel diameter	80 mm
Ambient temperature	+5°C to +40°C
<b>Order number</b>	<b>91 14 01 94</b>

## BENEFITS

- 3-sided panelled station made of stainless steel
- Recessed stainless steel worktop with a tightly welded installation niche
- Removable stainless steel splash guard on three sides.
- Side walls with a high-performance grease separator, removable grease collection trays.
- Low-noise radial fan and activated carbon filter, for odour neutralisation and the elimination of bacteria/microorganisms.
- Optimal, safe to move.
- 2 moisture-proof sockets with a hinged cover.
- Dishwasher-safe cyclone filter.
- Removable 3-sided splash guard.
- acs components can be removed without tools.